



AGRABAH

Writing Practice

All rights reserved. No part of this book may be reproduced, stored in a retrieval system, or transmitted in any form by any means—electronic, mechanical, photocopy, recording or otherwise—without prior permission of the publisher, except as provided by U.S. copyright law.

YOU MAY:

- Use these files for personal use **ONLY**.
- Download the files to your personal computer.
- Print as many copies as you would like to use.

YOU MAY NOT:

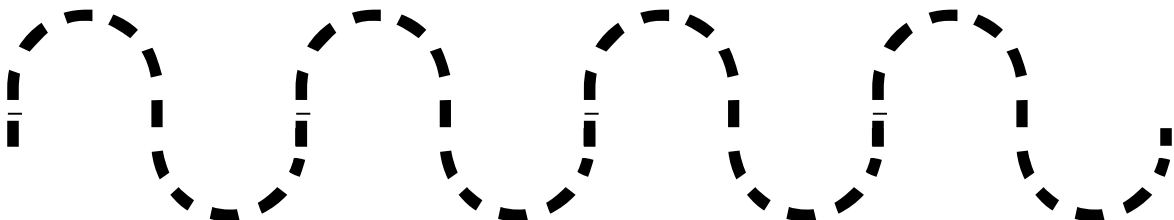
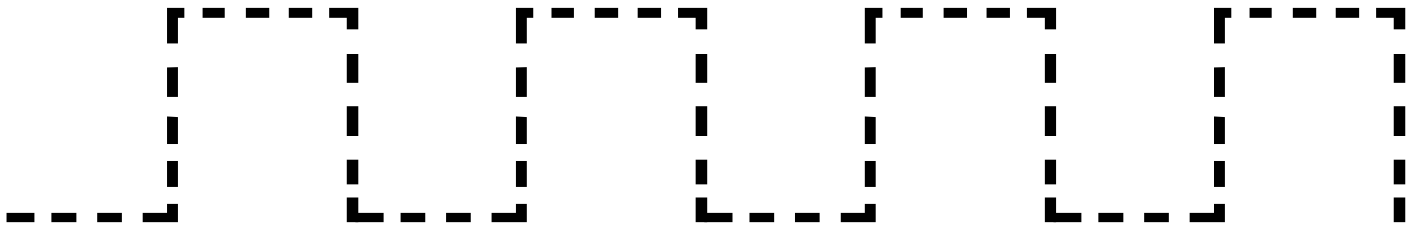
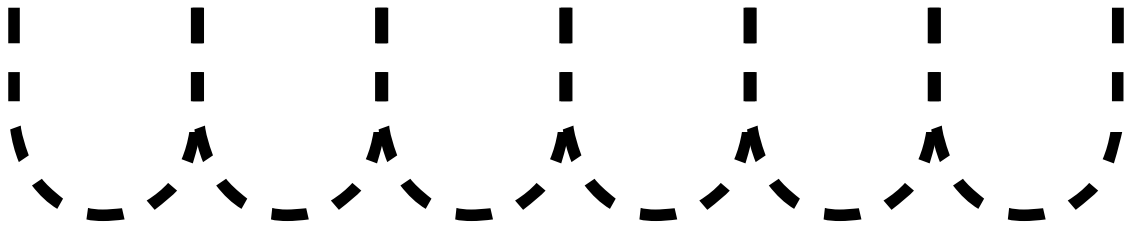
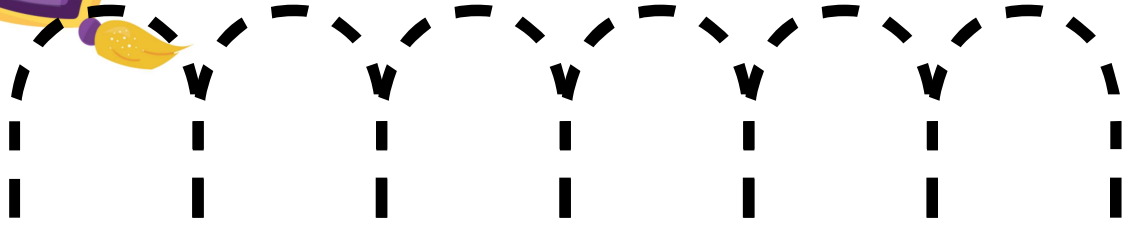
- Edit any of the printables.
- Share my files with anyone else.
- Store them on any website or forum.
- Claim them as your own.
- Print and sell/distribute to others.

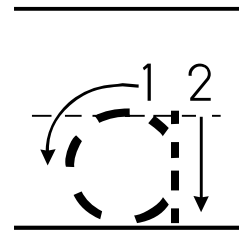
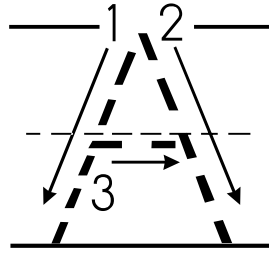
Clipart from:

Prettygrafik Design



Practice handwriting skills by tracing the lines below.





A a is for Aladdin

A l a d d i n



Handwriting practice lines for uppercase A, consisting of a solid top line, a dashed middle line, and a solid bottom line.



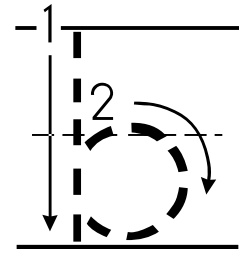
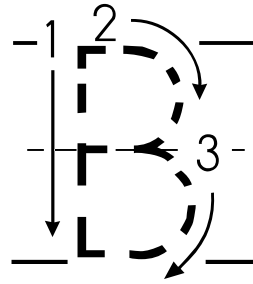
Handwriting practice lines for uppercase A, consisting of a solid top line, a dashed middle line, and a solid bottom line.



Handwriting practice lines for lowercase a, consisting of a solid top line, a dashed middle line, and a solid bottom line.



Handwriting practice lines for lowercase a, consisting of a solid top line, a dashed middle line, and a solid bottom line.



B

B

B

B

B

B

b

b

b

b

b

b

B

Handwriting practice lines for uppercase B, consisting of a solid top line, a dashed middle line, and a solid bottom line.

B

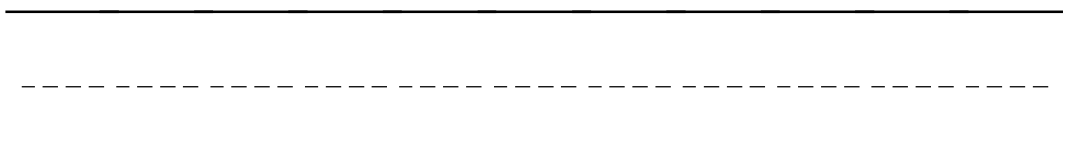
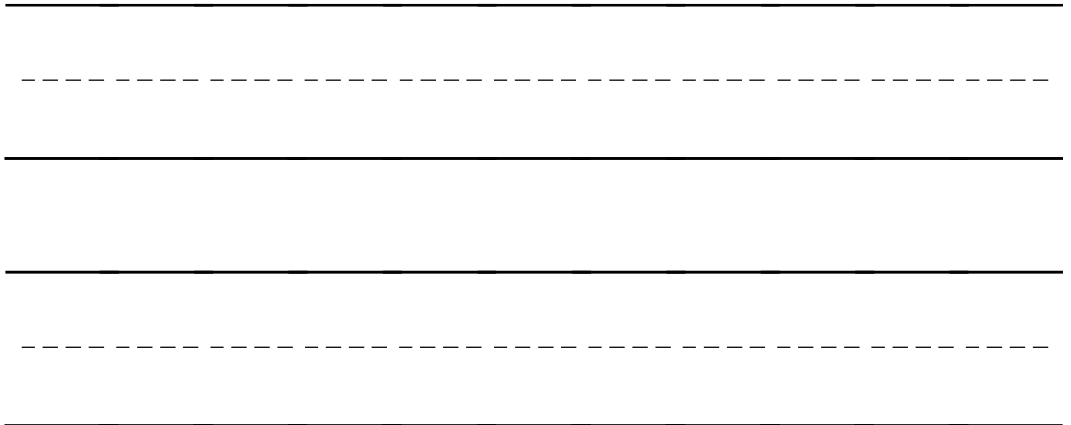
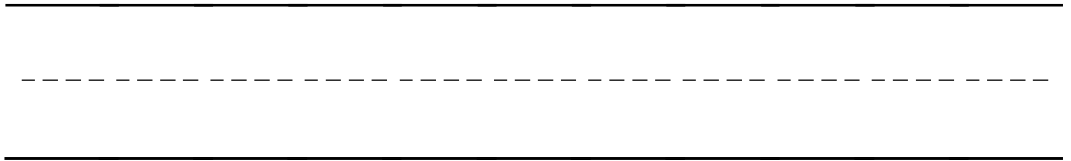
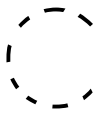
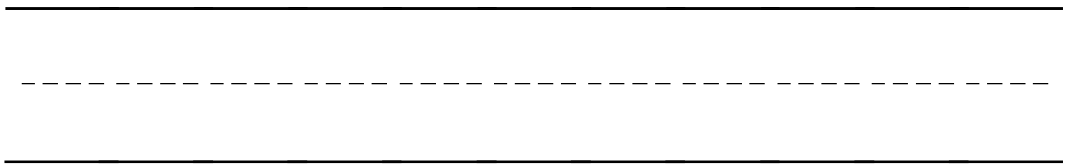
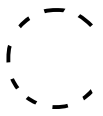
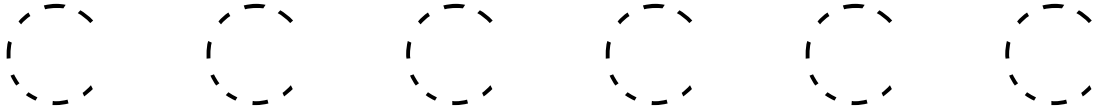
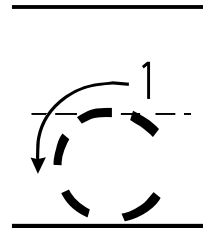
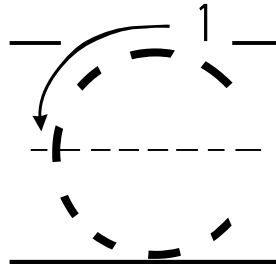
Handwriting practice lines for uppercase B, consisting of a solid top line, a dashed middle line, and a solid bottom line.

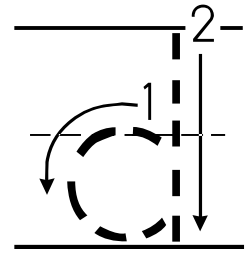
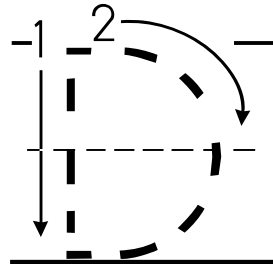
b

Handwriting practice lines for lowercase b, consisting of a solid top line, a dashed middle line, and a solid bottom line.

b

Handwriting practice lines for lowercase b, consisting of a solid top line, a dashed middle line, and a solid bottom line.





D D D D D D

d d d d d d

D

Handwriting practice lines for uppercase D, consisting of a solid top line, a dashed middle line, and a solid bottom line.

D

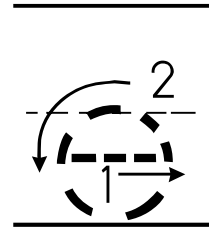
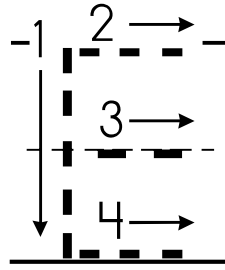
Handwriting practice lines for uppercase D, consisting of a solid top line, a dashed middle line, and a solid bottom line.

d

Handwriting practice lines for lowercase d, consisting of a solid top line, a dashed middle line, and a solid bottom line.

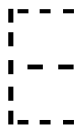
d

Handwriting practice lines for lowercase d, consisting of a solid top line, a dashed middle line, and a solid bottom line.

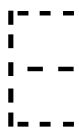


E e is for Enemy

E n e m y



Blank handwriting lines for practicing the uppercase letter E.



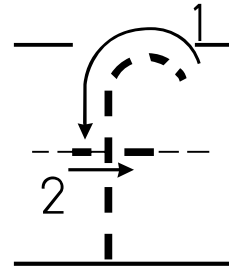
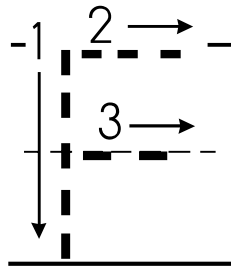
Blank handwriting lines for practicing the uppercase letter E.



Blank handwriting lines for practicing the lowercase letter e.



Blank handwriting lines for practicing the lowercase letter e.



F f is for Friend

F r i e n d

F

Handwriting practice lines for uppercase F, consisting of a solid top line, a dashed middle line, and a solid bottom line.

F

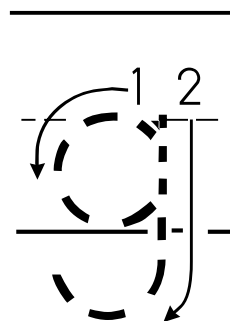
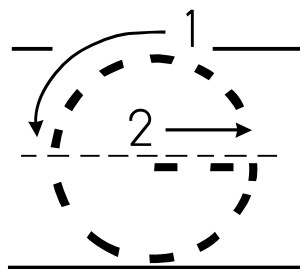
Handwriting practice lines for uppercase F, consisting of a solid top line, a dashed middle line, and a solid bottom line.

f

Handwriting practice lines for lowercase f, consisting of a solid top line, a dashed middle line, and a solid bottom line.

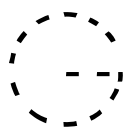
f

Handwriting practice lines for lowercase f, consisting of a solid top line, a dashed middle line, and a solid bottom line.



G g is for Genie

Genie



Handwriting practice lines consisting of a solid top line, a dashed middle line, and a solid bottom line.



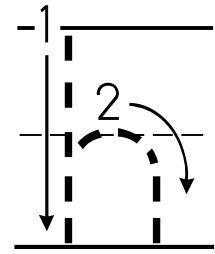
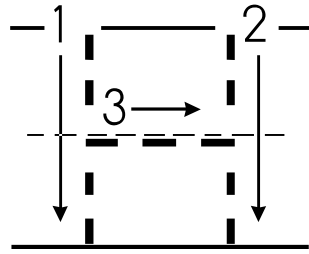
Handwriting practice lines consisting of a solid top line, a dashed middle line, and a solid bottom line.



Handwriting practice lines consisting of a solid top line, a dashed middle line, and a solid bottom line.



Handwriting practice lines consisting of a solid top line, a dashed middle line, and a solid bottom line.



H H H H H H

h h h h h h

H

Handwriting practice lines for uppercase H, consisting of a solid top line, a dashed middle line, and a solid bottom line.

H

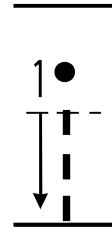
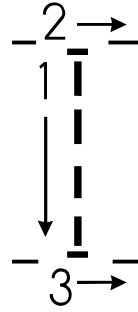
Handwriting practice lines for uppercase H, consisting of a solid top line, a dashed middle line, and a solid bottom line.

h

Handwriting practice lines for lowercase h, consisting of a solid top line, a dashed middle line, and a solid bottom line.

h

Handwriting practice lines for lowercase h, consisting of a solid top line, a dashed middle line, and a solid bottom line.



I i is for lagoon

lagoon



Handwriting practice lines for uppercase 'I' consisting of a solid top line, a dashed middle line, and a solid bottom line.



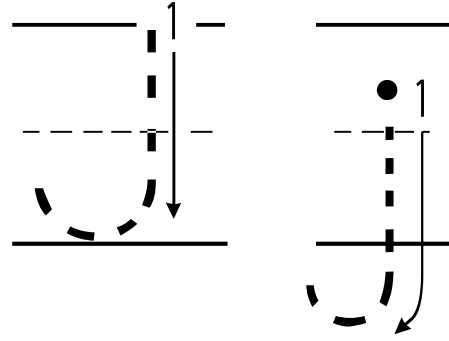
Handwriting practice lines for uppercase 'I' consisting of a solid top line, a dashed middle line, and a solid bottom line.



Handwriting practice lines for lowercase 'i' consisting of a solid top line, a dashed middle line, and a solid bottom line.



Handwriting practice lines for lowercase 'i' consisting of a solid top line, a dashed middle line, and a solid bottom line.

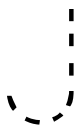


J j is for Jasmine

J a s m i n e



Handwriting practice lines consisting of a solid top line, a dashed middle line, and a solid bottom line.



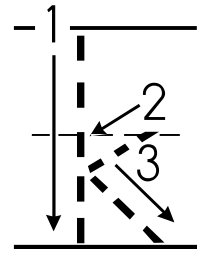
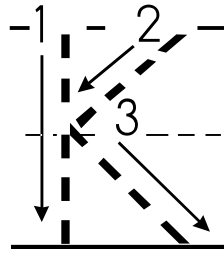
Handwriting practice lines consisting of a solid top line, a dashed middle line, and a solid bottom line.



Handwriting practice lines consisting of a solid top line, a dashed middle line, and a solid bottom line.



Handwriting practice lines consisting of a solid top line, a dashed middle line, and a solid bottom line.



K K K K K K

k k k k k k

K

Handwriting practice lines for uppercase K, consisting of a solid top line, a dashed middle line, and a solid bottom line.

K

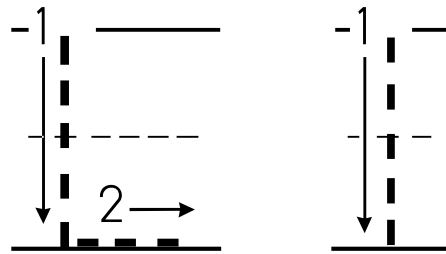
Handwriting practice lines for uppercase K, consisting of a solid top line, a dashed middle line, and a solid bottom line.

k

Handwriting practice lines for lowercase k, consisting of a solid top line, a dashed middle line, and a solid bottom line.

k

Handwriting practice lines for lowercase k, consisting of a solid top line, a dashed middle line, and a solid bottom line.



L l is for Lamp

L a m p

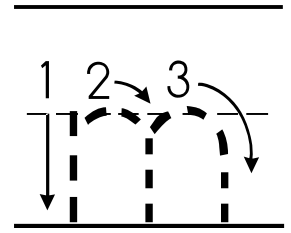
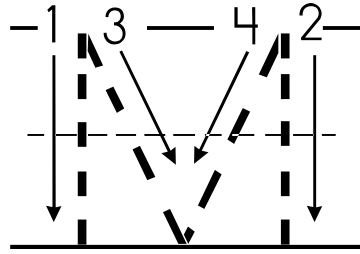
L

L

L

L

Four sets of handwriting lines, each consisting of a solid top line, a dashed middle line, and a solid bottom line. The first set is partially filled with the letter 'L' on the left side.



M

M

M

M

M

M

m

m

m

m

m

m

M

Blank handwriting lines for uppercase M practice.

M

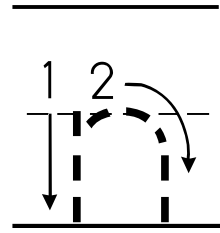
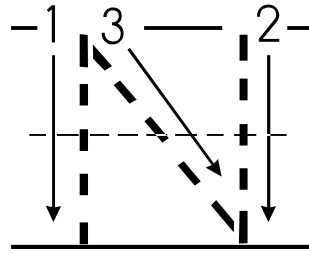
Blank handwriting lines for uppercase M practice.

m

Blank handwriting lines for lowercase m practice.

m

Blank handwriting lines for lowercase m practice.



N N N N N N

n n n n n n

N

Handwriting practice lines for uppercase N, consisting of a solid top line, a dashed middle line, and a solid bottom line.

N

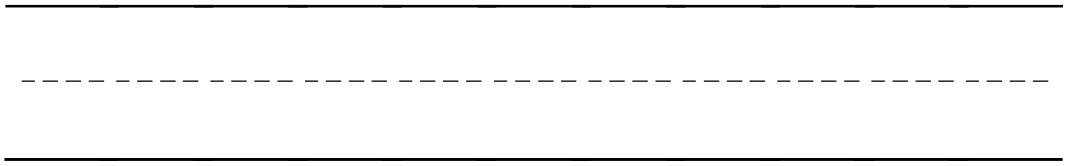
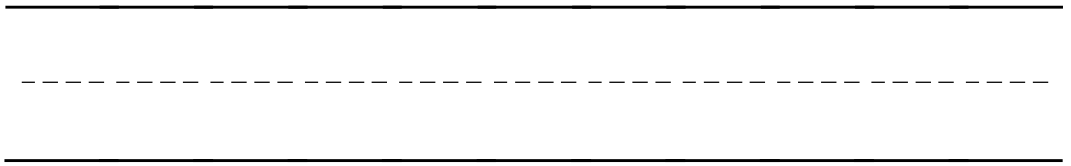
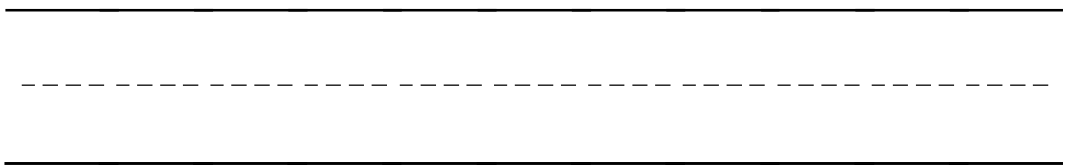
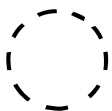
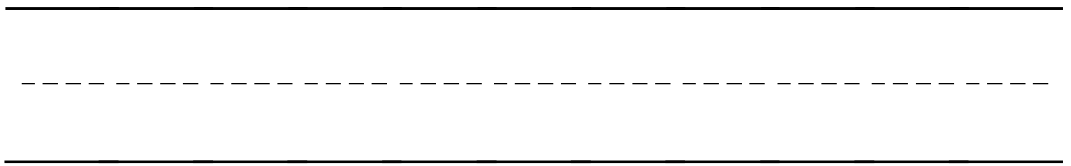
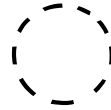
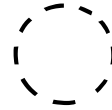
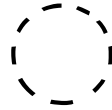
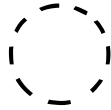
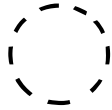
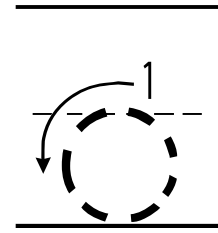
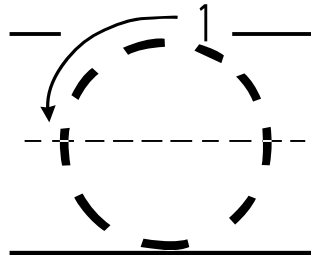
Handwriting practice lines for uppercase N, consisting of a solid top line, a dashed middle line, and a solid bottom line.

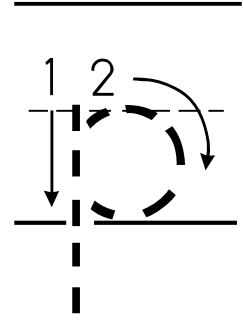
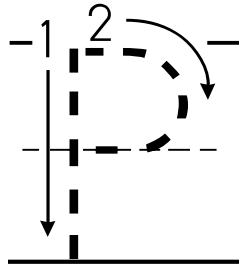
n

Handwriting practice lines for lowercase n, consisting of a solid top line, a dashed middle line, and a solid bottom line.

n

Handwriting practice lines for lowercase n, consisting of a solid top line, a dashed middle line, and a solid bottom line.





P p is for Palace

P a l a c e

P

Handwriting practice lines for uppercase P, consisting of a solid top line, a dashed middle line, and a solid bottom line.

p

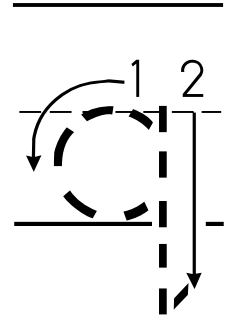
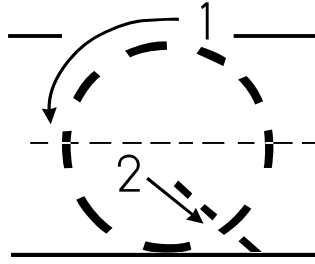
Handwriting practice lines for lowercase p, consisting of a solid top line, a dashed middle line, and a solid bottom line.

P

Handwriting practice lines for uppercase P, consisting of a solid top line, a dashed middle line, and a solid bottom line.

p

Handwriting practice lines for lowercase p, consisting of a solid top line, a dashed middle line, and a solid bottom line.



Blank handwriting lines for practicing uppercase Q. Each set consists of a solid top line, a dashed middle line, and a solid bottom line.



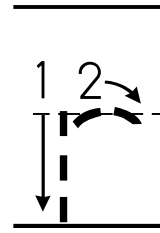
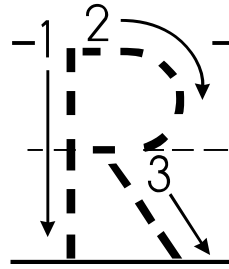
Blank handwriting lines for practicing uppercase Q. Each set consists of a solid top line, a dashed middle line, and a solid bottom line.



Blank handwriting lines for practicing lowercase q. Each set consists of a solid top line, a dashed middle line, and a solid bottom line.



Blank handwriting lines for practicing lowercase q. Each set consists of a solid top line, a dashed middle line, and a solid bottom line.



R R R R R R

r r r r r r

R

Handwriting practice lines consisting of a solid top line, a dashed middle line, and a solid bottom line.

R

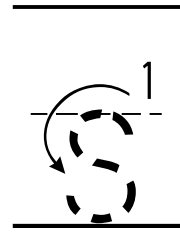
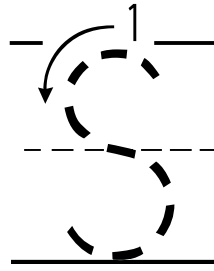
Handwriting practice lines consisting of a solid top line, a dashed middle line, and a solid bottom line.

r

Handwriting practice lines consisting of a solid top line, a dashed middle line, and a solid bottom line.

r

Handwriting practice lines consisting of a solid top line, a dashed middle line, and a solid bottom line.



S

S

S

S

S

S

s

s

s

s

s

s

S

Blank handwriting lines for practicing uppercase letter S.

S

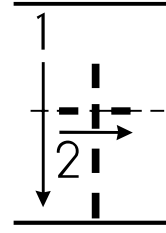
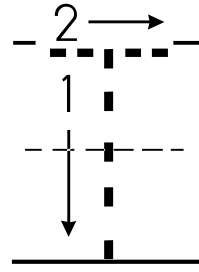
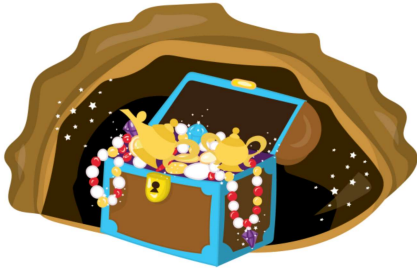
Blank handwriting lines for practicing uppercase letter S.

s

Blank handwriting lines for practicing lowercase letter s.

s

Blank handwriting lines for practicing lowercase letter s.

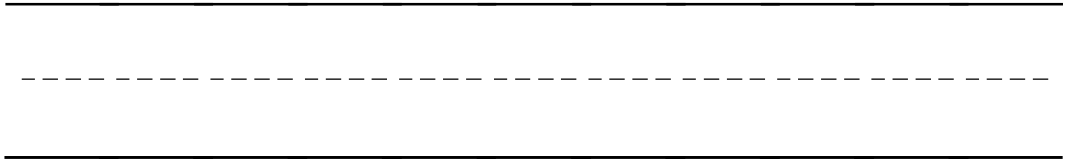
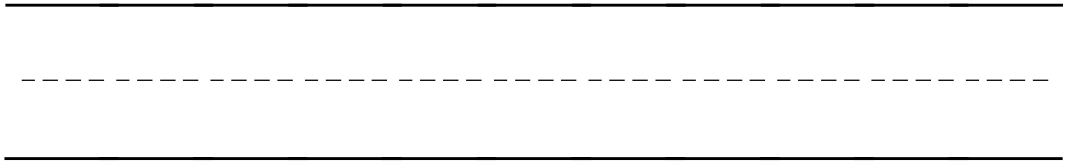
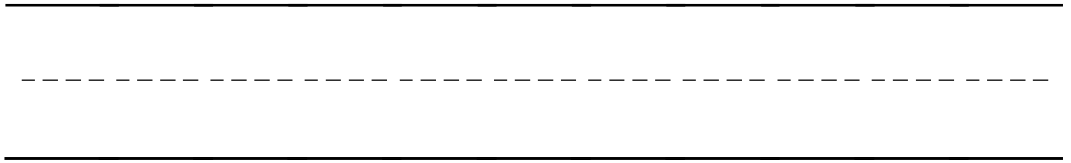
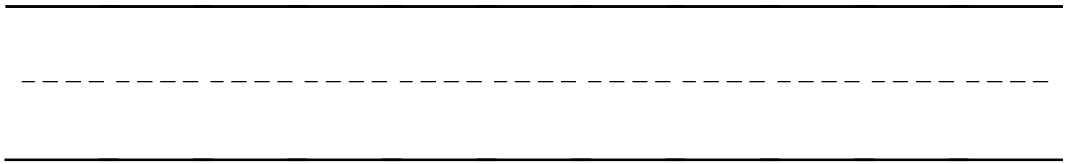
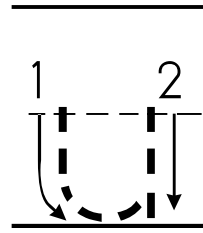
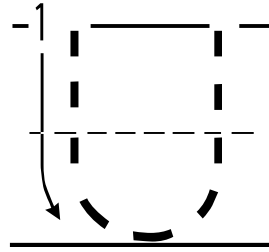


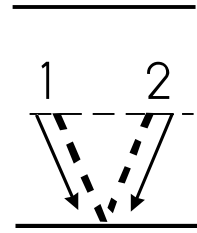
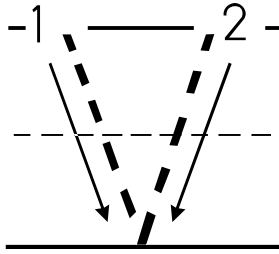
T t is for Treasure

Treasure



Four sets of handwriting lines, each consisting of a solid top line, a dashed middle line, and a solid bottom line, for practicing writing the letters T and t.





Handwriting practice lines consisting of a solid top line, a dashed middle line, and a solid bottom line.



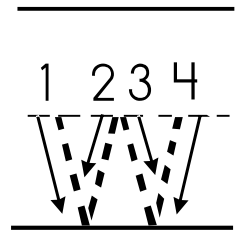
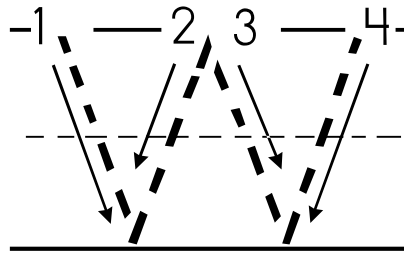
Handwriting practice lines consisting of a solid top line, a dashed middle line, and a solid bottom line.



Handwriting practice lines consisting of a solid top line, a dashed middle line, and a solid bottom line.



Handwriting practice lines consisting of a solid top line, a dashed middle line, and a solid bottom line.



W w is for Wishes

Wishes

W

Handwriting practice lines for uppercase W, consisting of a solid top line, a dashed middle line, and a solid bottom line.

W

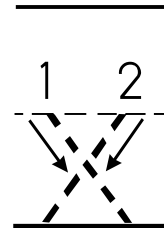
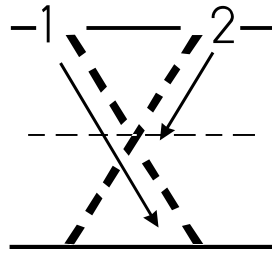
Handwriting practice lines for uppercase W, consisting of a solid top line, a dashed middle line, and a solid bottom line.

w

Handwriting practice lines for lowercase w, consisting of a solid top line, a dashed middle line, and a solid bottom line.

w

Handwriting practice lines for lowercase w, consisting of a solid top line, a dashed middle line, and a solid bottom line.



Handwriting practice lines consisting of a solid top line, a dashed middle line, and a solid bottom line.



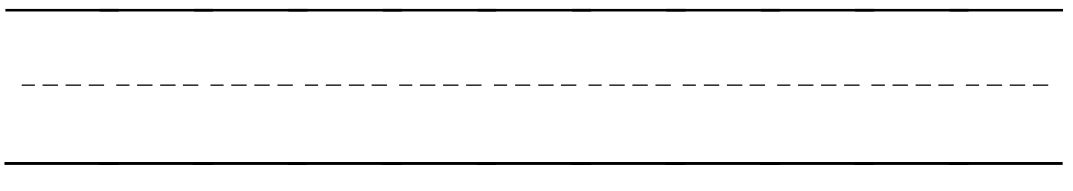
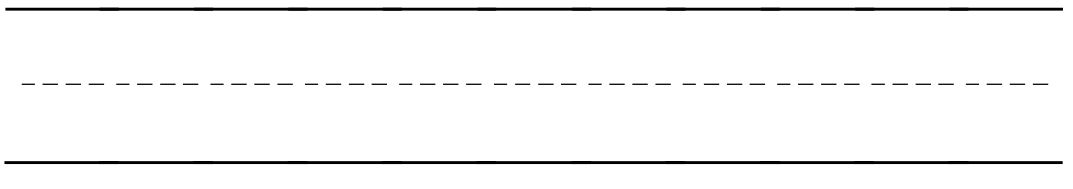
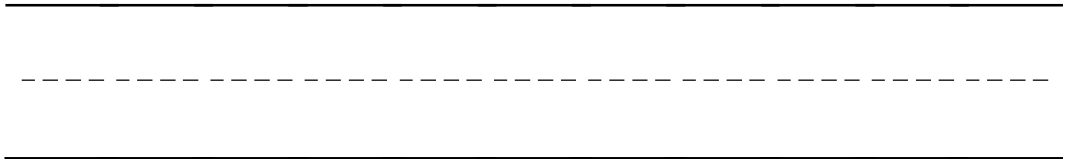
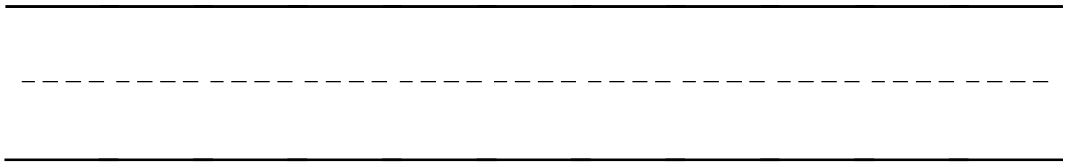
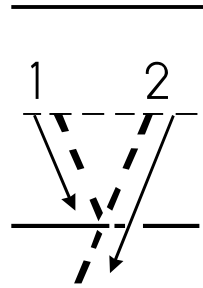
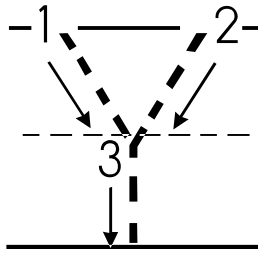
Handwriting practice lines consisting of a solid top line, a dashed middle line, and a solid bottom line.

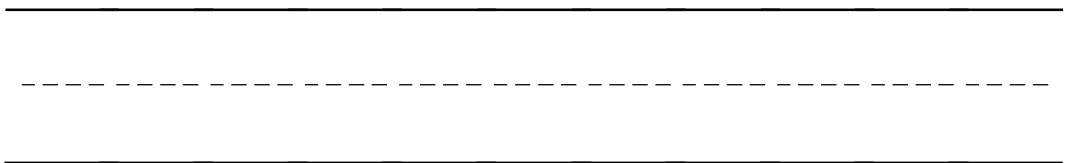
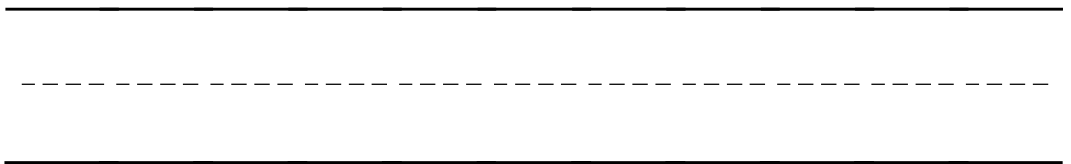
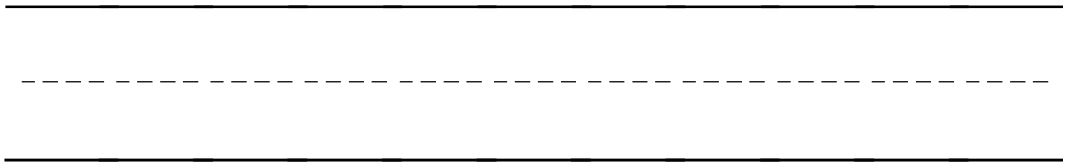
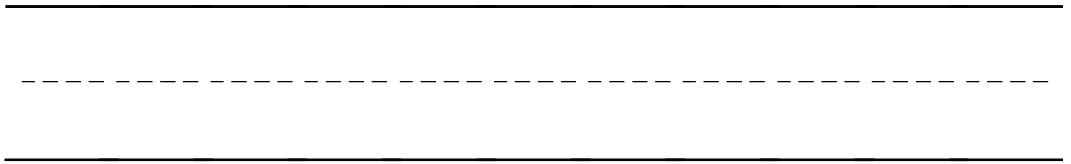
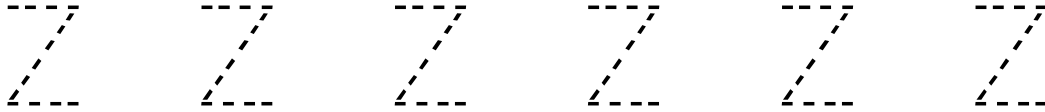
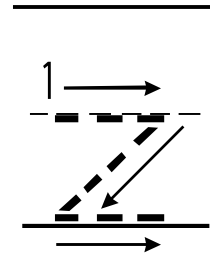
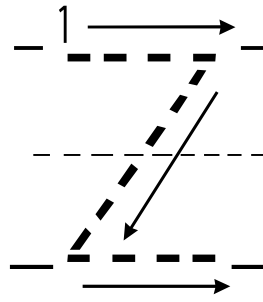


Handwriting practice lines consisting of a solid top line, a dashed middle line, and a solid bottom line.



Handwriting practice lines consisting of a solid top line, a dashed middle line, and a solid bottom line.







A l a d d i n

J a s m i n e

G e n i e

F r i e n d

E n e m y



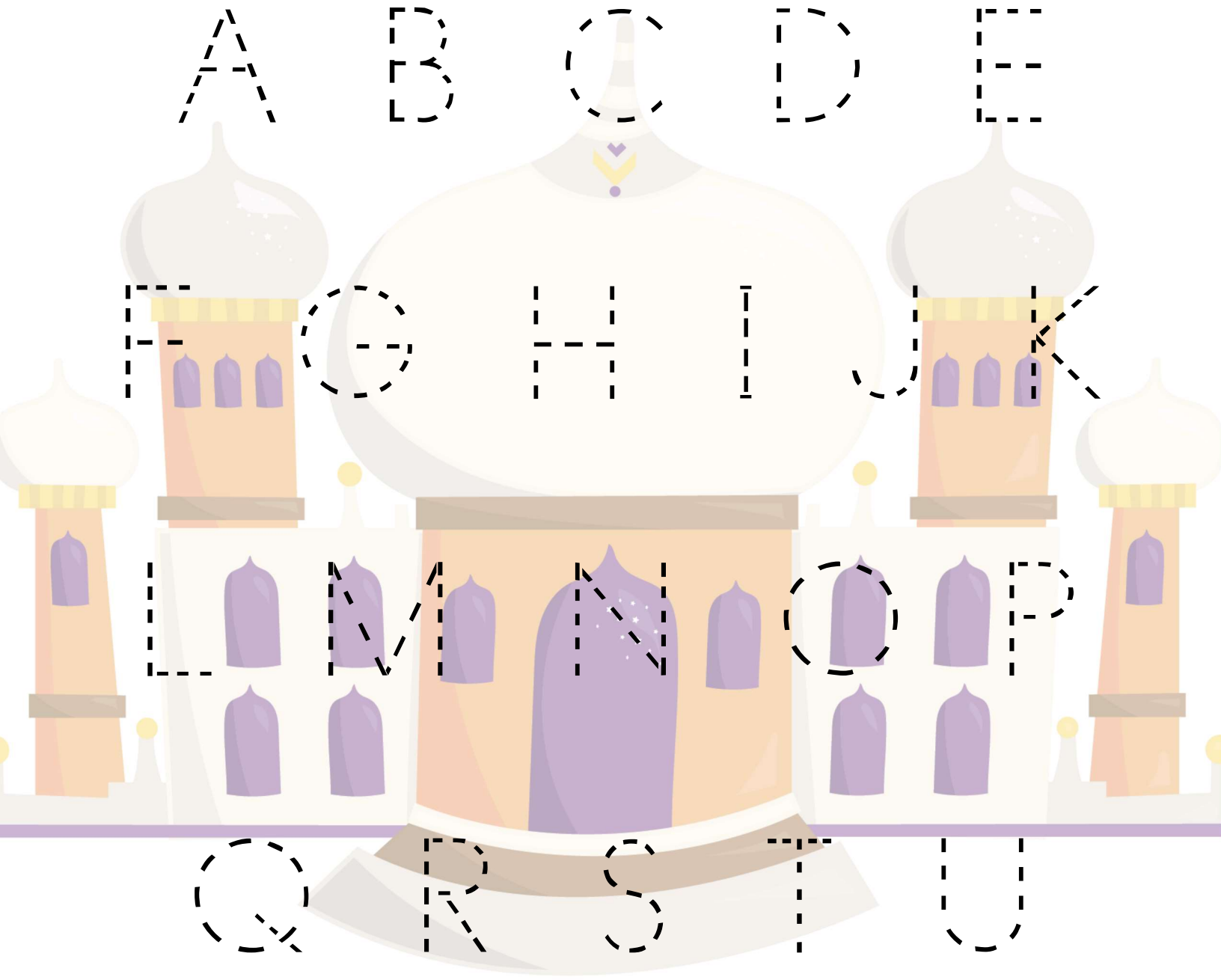
Iago

Palace

Treasure

Lamp

Wishes



A

B

C

D

E

F

G

H

I

J

K

L

M

N

O

P

Q

R

S

T

U

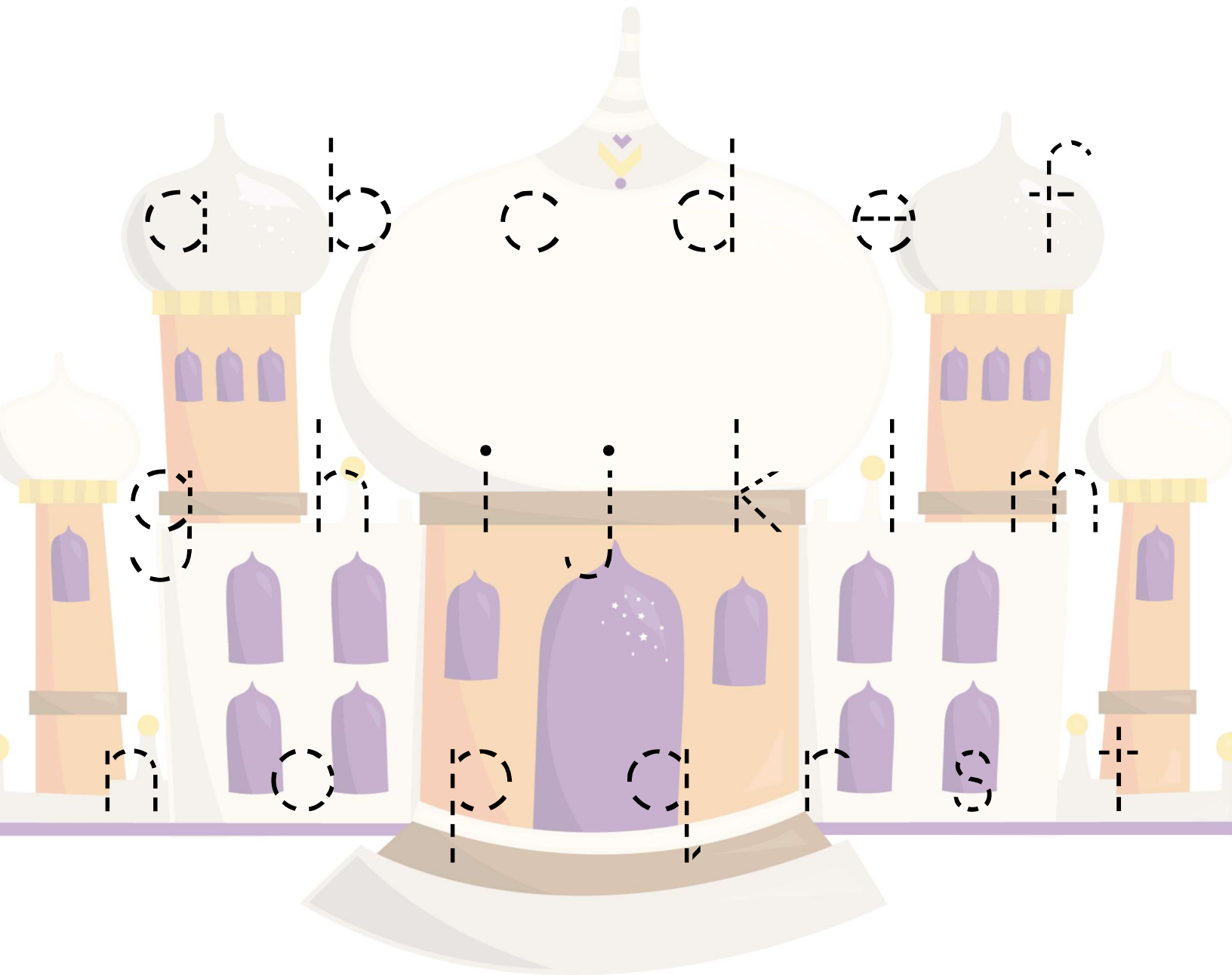
V

W

X

Y

Z



u

v

w

x

y

z

0

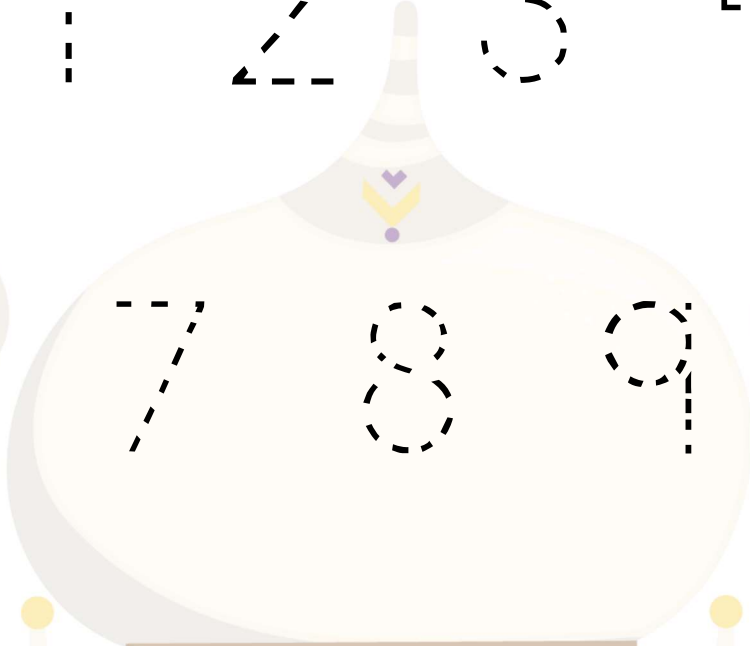
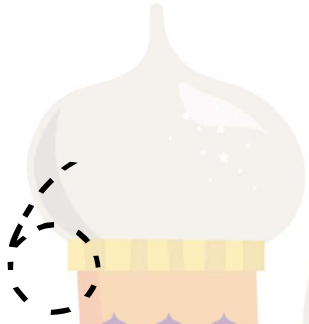
1

2

3

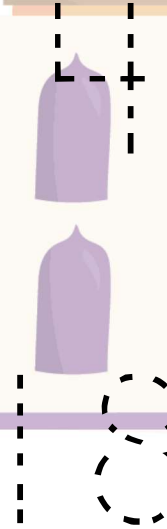
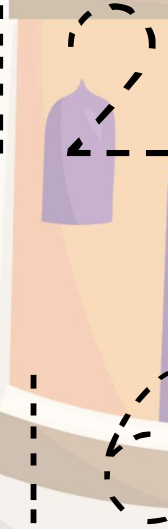
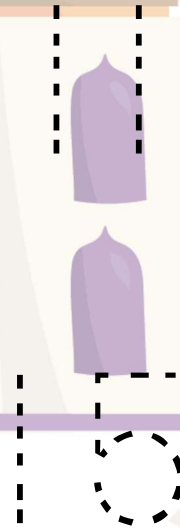
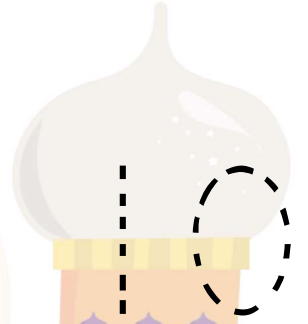
4

5



8

9



15

16

17

18

19

20